

## LISBON AND THE FOOTBALL STADIUMS IN THE MODERN PORTUGUESE ARCHITECTURE

### Principal Investigator / PI

Paulo Almeida

### Integrated Researchers of CIAUD

João Sousa Morais

Jorge Boueri

### Collaborating Researchers of CIAUD

### External Researchers

Filipe Carmo

João Carrola Gomes

## Keywords

History of Architecture; Portuguese Architecture; Sports Facilities.

### Partner Institutions

Fundação Calouste Gulbenkian

### Expected Future Partner Institutions

Sport Lisboa e Benfica

Sporting Clube de Portugal

Clube de Futebol "Os Belenenses"

## OBJECTIVES

To understand the Portuguese architectural production in the 1950s, namely the public facility production.

To understand the heritage of the architects responsible, their influences and the insertion of stadiums in their production.

To preserve the memory - the conservation, archiving and cataloging of the collections.

To understand the work of the stadiums in Lisbon in the 1950s by studying their form and the design process.

## BIBLIOGRAPHIC REFERENCES

ACCIAIUOLI, Margarida (1991) – *Os anos 40 em Portugal: o país, o regime e as artes "restauração" e "celebração"*. Dissertação de Doutoramento. Lisboa: FCHS-UNL.

ALMEIDA, Pedro Vieira – *A Arquitectura do Estado Novo: uma leitura crítica*. Lisboa: Livros Horizonte, 2002.

BARKHOFEN, Eva-Maria - *Architecture in Archives: The Collection of the Akademie der Künste*. Berlin: DOM Publishers, 2017.

MALHEIRO, Joana Bastos – *Arquitetura Portuguesa do Século XX: uma cronologia*. Lisboa: Caleidoscópio, 2019.

TOSTÕES, Ana (1997) – *Os Verdes Anos na Arquitectura Portuguesa dos Anos 50*. Porto: FAUP Publicações.

## ABSTRACT + IMAGES

Football as the main source of entertainment in Portugal in the 20th century promoted and required its own space for its exhibition. The further promotion of this sport, specifically during the Estado Novo period, further fuelled what was already an associative movement. The city of Lisbon witnesses, in this period, a great migratory affluence, becoming the stage for many of these associations which later on become true sporting institutions, imprinting indelibly on the Lisbon culture and, subsequently, on the country. At the same time, the stadiums, the great houses of sports and competitive practice, became the architectonic events of the city of Lisbon, true poles of attraction for the masses.

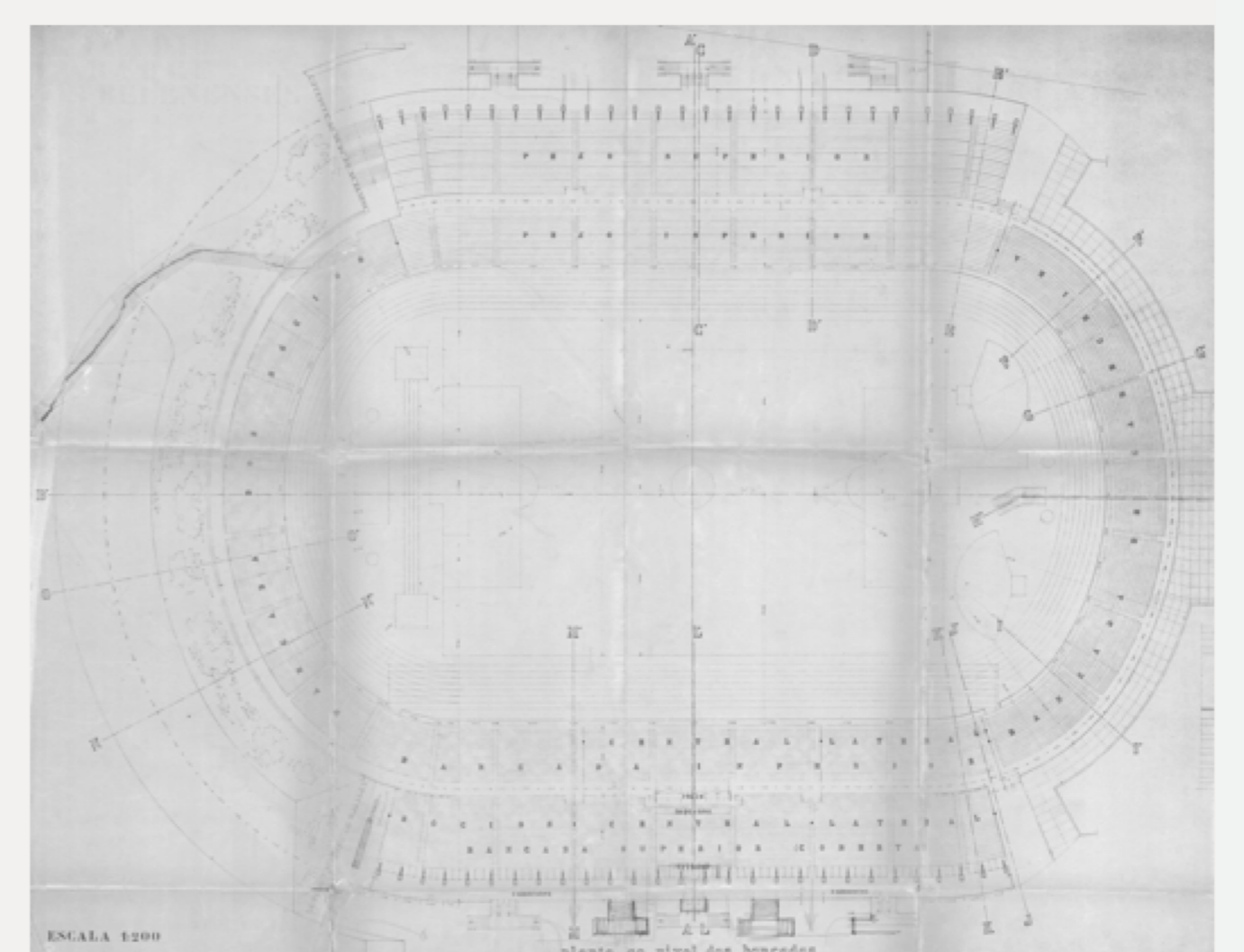
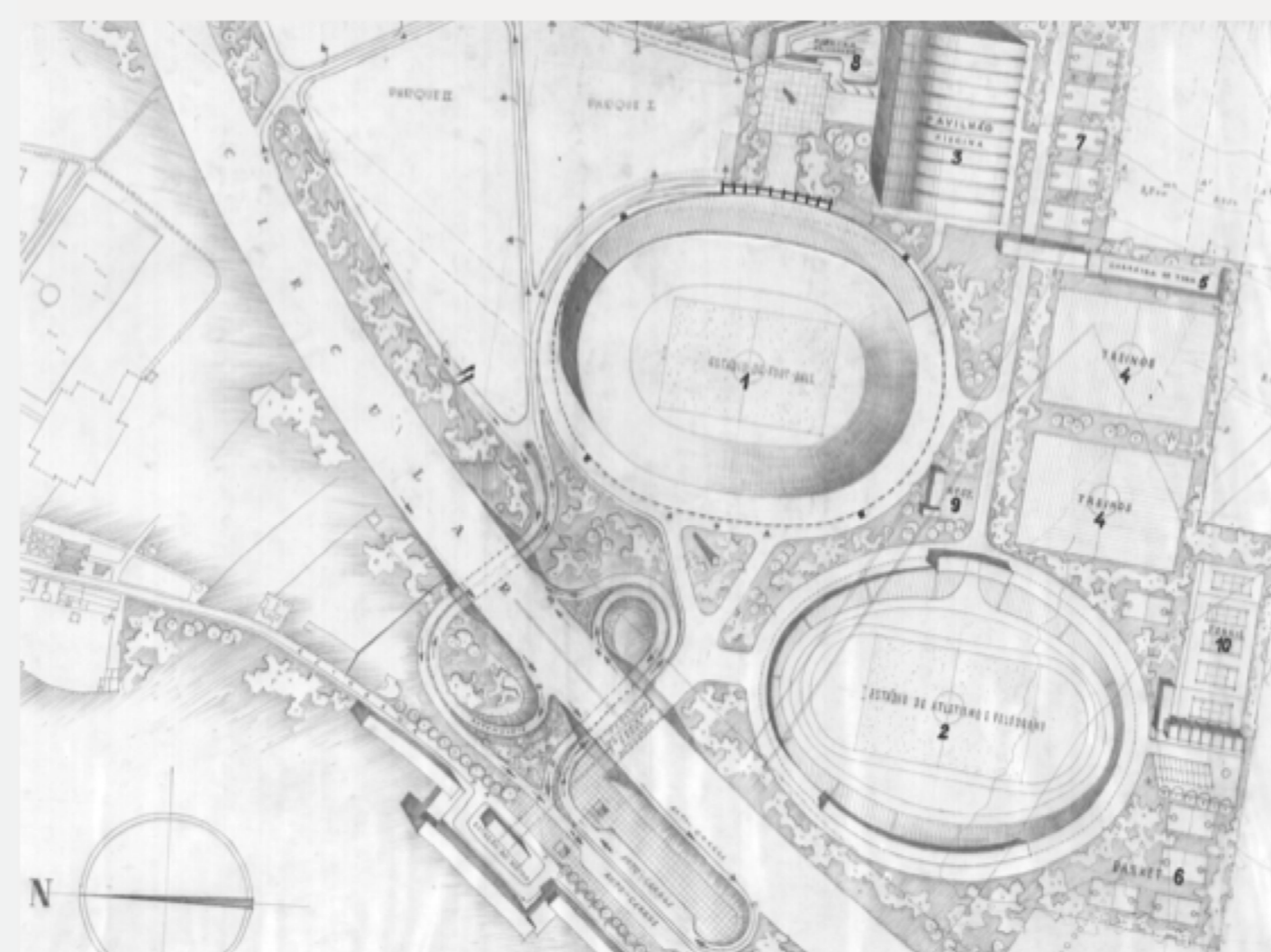
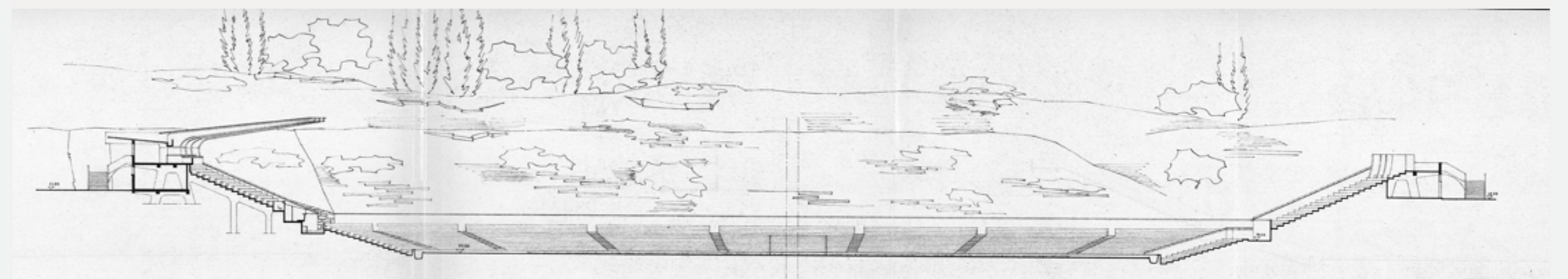
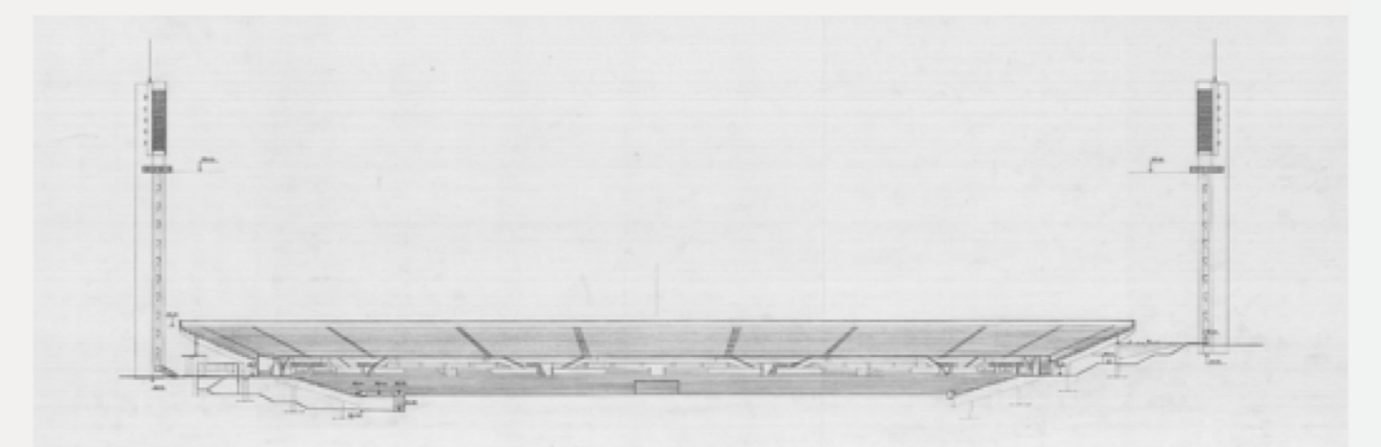
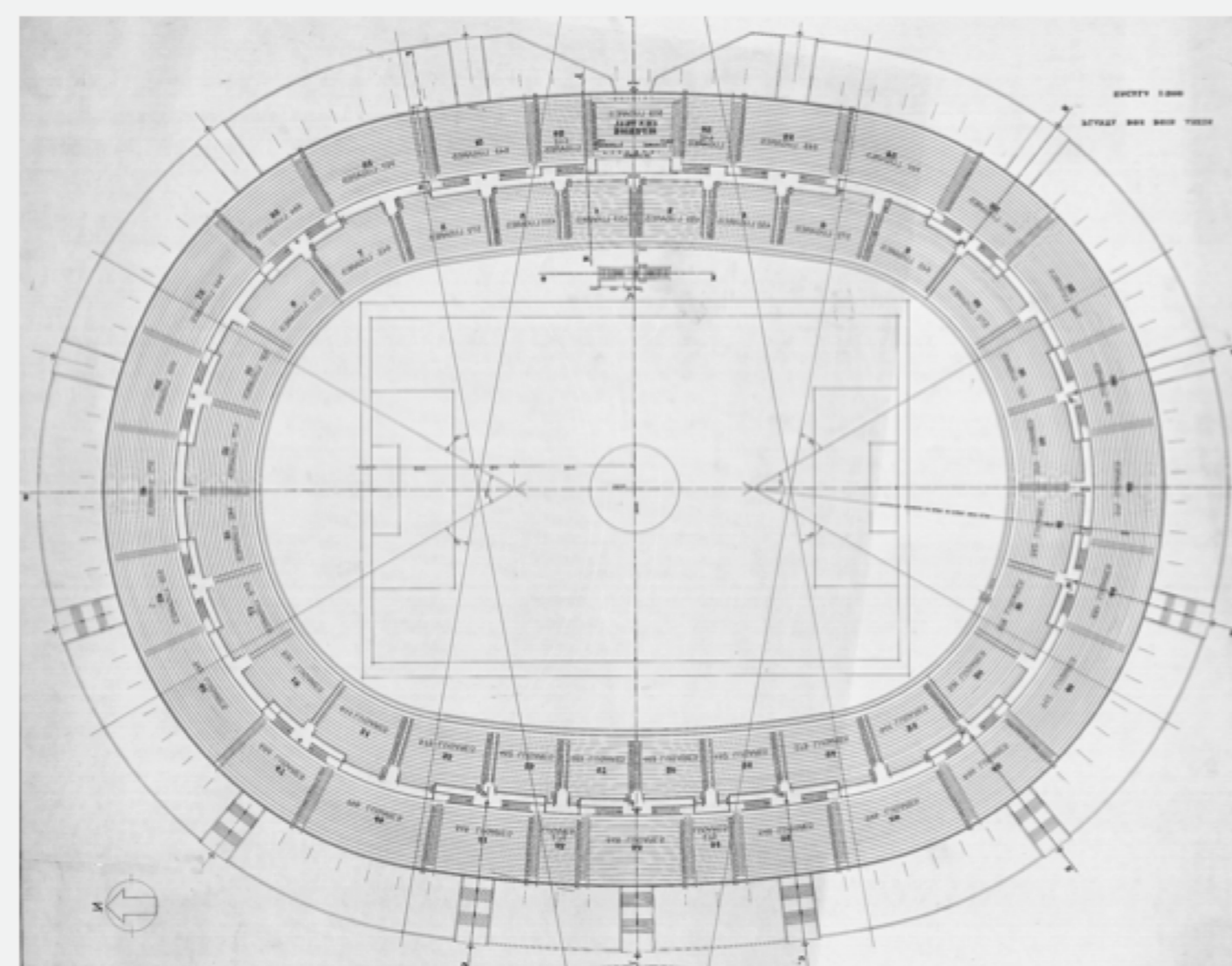
But what were the influences for the design of these buildings, so permanent in the memory of their users? What were the motives and the theoretical context of their formal and structural design? And, finally, what impact did their construction have on the place? The answer necessarily involves re-reading the paths of those responsible for these projects.

FA-UL has received the collections of the architects Carlos Chambers Ramos (1897-1969), João Simões (1908-1993) and Anselmo Fernandez (1918-2000) - now in the care of the Archives of Architecture, Urbanism and Design - ARCH/VES - a unit of FA-UL created with the aim of preserving, now in the care of the Archives of Architecture, Urbanism and Design - ARCH/VES - a unit of the FA-UL, created with the aim of preserving, enhancing and disseminating the collections and holdings in its care, as well as promoting the study and research on these and the architectural and artistic culture that surrounds them, from the 19th century to the present day - presents an opportunity to understand comparatively their perspective on this collective equipment.

Through the research and cataloguing of their collections and the understanding of the creative process, as well as the influences, declared and possible, and stylistic currents they imbued themselves with; we seek to understand the final form of the Sport Lisboa e Benfica (by João Simões), Sporting Clube de Portugal (Anselmo Fernandez) and Clube de Futebol "Os Belenenses" (by Carlos Ramos and Jorge Viana) stadiums.

If we look at the project dates of the different stadiums - Benfica's stadium from 1950 to 1954, Sporting's stadium from 1954 to 1956, Belenenses' stadium in 1952 -, we realize that all of them are contemporary, assuming the hypothesis that their authors have shared currents of thought about sports architecture and regarding construction techniques and tectonic culture. We will investigate which were these currents, through the analysis of the estate of each of these architects.

We expect to contribute to the history of the built environment of the city of Lisbon, particularly to the history of the entertainment precincts. The focus brought on the dynamic of sports associations and its link with the architectural process, is a powerful reminder of the effort spent on the creation of the houses of sport in the mid XX century, and the impact they generated on the people that used it throughout the second half of the same century whether as sports fans or as spectacles participants.



## SCIENTIFIC RELEVANCE FOR THE DISCIPLINE

The study of architectural design processes produces scientific knowledge on the practices with the best results in the discipline. This knowledge in turn enables the formulation of new methodologies to and approaches to complex problems and contemporary challenges, through innovative and more refined solutions. Our investigation can not only bring this knowledge specifically on sports facilities as other projects that may be subject to the same aspects such as form, tectonics, the influences of the socio-cultural context, etc.

The study of these projects within the larger scope of the Portuguese Architectural production of the mid century, may contribute to other investigations on the same thematic area as well as bring new insights on the architectural practices and its confrontation with the government and societal constraints, in a very specific time period under an oppressive regime, and with a very restricted stylistic code.

## EXPECTED ECONOMIC AND SOCIAL IMPACT

The divulgation of the images and drawings collected as well of the process through which these stadiums came to exist, will stimulate the social cohesion by focusing on the cultural importance of these facilities on the lives of the general public, specially on what concerns visual culture. The football industry is a integral part of the lives of many in Lisbon and Portugal, and for half a century these stadiums have exerted a special allure to the interested people. These people included not only the sports fans, but the inhabitants of the city and the public of the spectacles that occurred in these stadiums.

The stadiums are thusly a ubiquitous part of the urban culture of Lisbon, and subsequently of its inhabitants. To tell the history of its architectural process is to tell the history of a part of the city. Our goal is also to bring to focus among the general public such an integral part of their lives, where such impactful events took place.

Lastly the part of the associative movements of sport in the construction of these stadiums is unquestionable and reinforces the aptitude of these groups to promote culture and even the construction of a large building for its occurrence. The memory of these associative initiatives allows for the stimulation of these actions so cohesive and economically impactful on societies

## RESEARCH PLAN AND TASKS

In order to achieve our objectives, we will use the collections that were donated to the Faculty of Architecture, namely to the Archives of Architecture, Urbanism and Design - ARCH/VES. The collections present in this unit include those of the three architects listed above. However, they first need to be organised and catalogued in order to facilitate access, as well as the construction of a systemic and more comprehensive reading. It is therefore necessary first to go through the entire collections and identify the projects contained therein, especially those projects that we have constituted as case studies. In this phase we will give a unique identifier to each project and each piece, so that they can be consulted in the future and make possible the consultation of the existing material, for future research purposes.

After this identification, we will cross-reference the chronological information and study each architect's educational and professional background in order to understand at what stage of their career the projects under study were produced. Who did they contact, what books and magazines did they read, what inspiration did they draw from other projects? What role did the associates and directors play in the architectural design process? On a more general level, what cultural and theoretical currents, Portuguese and European, influenced these architects and how was this influence reflected in the works of the stadiums?

For this, we will use not only the processes, which include the descriptive and justificatory memories and the correspondence between the different intervening parties; but also interviews, articles in specialized and generalist periodicals. Some scientific publications such as the book by TOSTÕES "The Green Years in the Portuguese Architecture of the 1950s" and the dissertation by ACCIAIUOLI "The 1940s in Portugal: the country, the regime and the arts "restoration" and "celebration", as well as the chronology by MALHEIRO "Portuguese Architecture of the 20th Century: a chronology", will also be essential for the understanding of the time period theoretical and conceptual framework. All these elements will be analyzed in order to constitute a context of the discipline of Architecture where we can understand the integration of the performance of architects and the way of doing Portuguese architecture in the 1950s.

Subsequently, we will proceed to the digitization and digital arrangement of the drawings and processes related to the projects under study. In order to be able to include facsimiles in later dissemination activities and scientific papers, we will have to digitise not only the drawings (plans, cross-sections, elevations, perspectives), but also the descriptive reports, justification reports and correspondence. The specifications and specialty projects, although not under analysis, will also be scanned in order to enhance future explorations within the constructive and tectonic subjects.

Each image will need to be digitally treated after scanning, with the possibility of vectorial redrawing so that they can be presented in large format. In order to carry out this work as quickly and efficiently as possible, we need an assistant and a workstation, requiring a laptop.

The next task is related to the formal analysis of the projects under study, decomposing the final forms in their constitutive elements, thus allowing the formulation of the stylistic and compositional lexicon. From this decomposition it becomes possible the comparative analysis and identification of formal invariants and similarities in the languages of each project. Adding the previous information on contextual influences, we will produce a comparative table from which we will draw our conclusions. These conclusions will focus especially on the studied projects and their relation with the city of Lisbon.

Finally, there will be a need to share the conclusions we reach in order to have the expected impact. As far as the scientific and academic community is concerned, we hope to integrate this information in lectures and classes supporting design, history and theory, as well as in the field of structures. Dissemination of findings through publications in refereed, peer-reviewed journals and magazines is essential if this research is to lead to further explorations within the same thematic field.

The publication of a monograph serves both the scientific community, seeking the necessary rigor, and the community at large, in an effort to disseminate history and architecture as inseparable components of daily life and local culture. The exhibitions we propose would serve the same purpose of disseminating to the general public the conclusions generated, seeking to integrate the community in the productions produced by the scientific community.

Task 1 - Review of each of the architects' archives

Task 2 - Cataloguing each process within these portfolios

Task 3 - Identify the projects in focus within the overall production

Task 4 - Digitization and digital processing of the projects

Task 5 - Formal analysis of the elements and systematic analysis of the case studies

Task 6 - Comparison of formal and theoretical information between the case studies

Task 7 - Conclusions and characterization of the architectural practice on stadiums in Lisbon

Task 8 - Dissemination in the form of lectures, exhibitions, publication of a monograph and publication in scientific journals.

## EXPECTED SCIENTIFIC RESULTS

The expected results are as follows: the study of sportive structures during the 50's. The research scope is:

1. The preparation of a book as the result of the project.
2. Integration of the results (biography, architectural work and images of the most significant projects) in ARCH/VES Website, providing public and open access to the principal outputs of the research project at an international level. The implementation process of this platform will also enable the opening of these collections to be studied by Master's and PhD students.
3. Productions of Papers to be published in indexed publications.
4. Exhibition for the dissemination of the records and information collected.

## BUDGET: € 7.483,89

The expenses of this Embryo Project will focus on the dissemination of its results, both in the publication of a book and the preparation of an exhibition. So, the budget was structured in:

Graphic Elements and prototyping - 3000 euros will be set aside for printing the book and 1000 euros for printing panels for the exhibition. 600 euros will be allocated to make mock-ups of the 3 projects at two scales each. To organize the documentation of these projects, models and photographs we will need 3 shelves (Picking Galvanized 250) with 3 meters high, 1.6 wide, 0.8 deep and 6 shelves. Each shelf is worth 523.11 euros, which makes a total of 1569.33 euros.

Equipment - An amount of 799 euros is also requested for the acquisition of one iPad 256 GB, for digital contents. It is also required 2 HDD Extern WESTERN DIGITAL Elements SE Portable disk (2Tb - USB 3.0) that costs 79,99 euros each, total 159,98 euros. Finally, 2 Disco HDD Extern WESTERN DIGITAL (6 TB - USB 3.0) , 162,79 euros each (total 355,58 euros. These four expenses make a final/total cost of 7483,89 euros.